

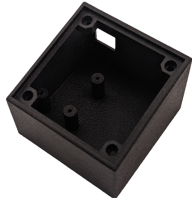

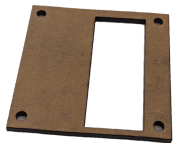






JOSC Devices LVL Wheel Assembly Instructions

A. Contents

	QTY	Description	Photo
A	1	Custom LVL Wheel PCB	
B	1	Rotary Encoder	
C	1	USB connector	
D	1	3d printed Bin	
E	1	3d printed Wheel	
F	1	Laser Cut acrylic lid	
G	4	6 mm m3 Screw	
H	4	m3 Heatset Insert	
I	4	m2 Threaded Machine Screws (3 + 1 Spare)	
J	4	Self-Adhesive Rubber Feet	
K	1	USB A to B Cable	

JOSC Devices LVL Wheel Assembly Instructions

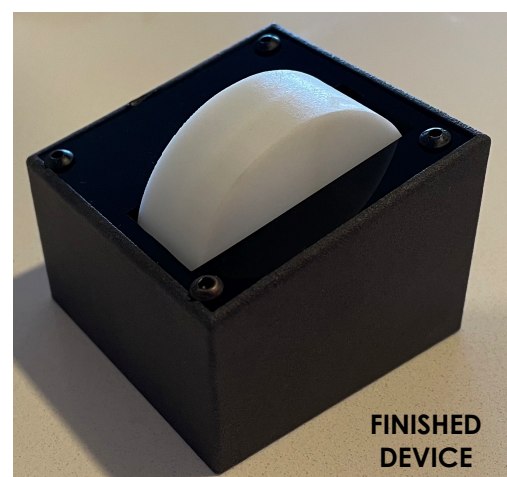
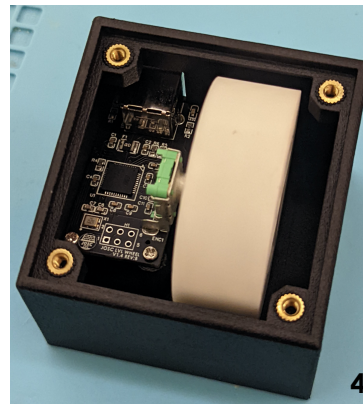
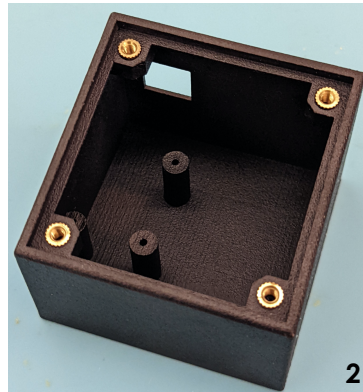
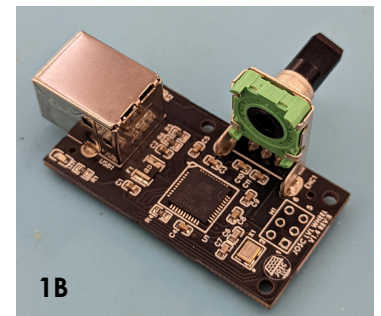
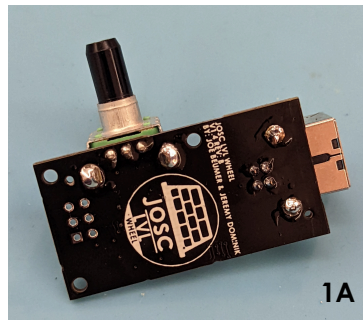
B. Tools/Materials Needed

Soldering Iron & Solder
Allen Key(s) or drivers for tightening M3 Screws
Precision Philips Screwdriver

C. Soldering and Assembly Instructions

1. Solder encoder and USB to top of PCB.
Note the H1 header is only used to initially flash the boot-loader and will not have anything soldered to it.
2. Using a soldering iron, heat the 4 brass inserts into the holes for the lid.
3. Press fit the wheel onto the encoder, pay attention to line up the keying on the wheel. Make sure you secure it all the way on.
4. Attach the PCB to the case with the 3 m2 screws, be careful to not over tighten the screws to avoid stripping or cracking the nylon of the case standoffs.
5. Secure the lid onto the case with the 6mm m3 screws. Note the cut out for the wheel is asymmetric; the skinnier edge should be on the bottom.
6. Stick on the rubber feet and enjoy your level wheel!
7. Take photos and let us know how it's going!
We're on Instagram (barely) at @joscddevices.

QUESTIONS? Email us at JOSCDdevices@gmail.com



**FINISHED
DEVICE**